



KELINE

Cat. 6 unshielded components

Cat. 6 lost its significance when 10GBASE-T was introduced in 2006.

There is no protocol which would effectively utilize Cat. 6.

A bandwidth of 250 MHz is insufficient for 10GBASE-T and, in case of 1000BASE-T, only 32 % is used, which means 170 MHz of wasted bandwidth!

Due to Alien Crosstalk issues, Cat. 6 cabling is not able to provide reliable transmission of 2,5GBASE-T and 5GBASE-T protocols.

Cat. 6 enables the same maximum transmission speed as Cat. 5E.

Unshielded components are not resistant to electromagnetic interference.

Unshielded cables must be installed with a distance of up to 5x greater from power cables than shielded cables.

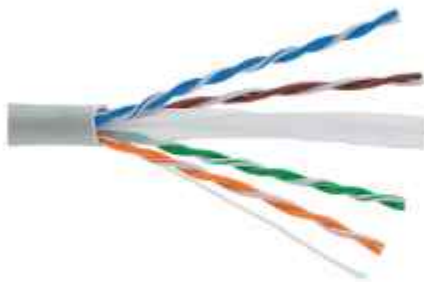


1
Gigabit

Cat. 6

400
MHz

LSOH

D_{ca}

UTP (U/UTP) cable 4x2x0,54, Category 6, 400 MHz, LSOH, Euroclass D_{ca} - s2, d2, a1

P/N: KE400U23LSOH-Dca-RLX

305 m in a box

- unshielded cable with pairs separated by a cross filler, halogen-free sheath
- enables transmission of all high-speed protocols including 1000BASE-T
- tested in a bandwidth up to 400 MHz
- not shielded against electromagnetic interference

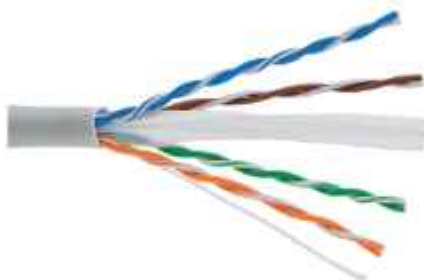
Min. bending radius	installation	48 mm
	operation	24 mm
Max. tensile load		100 N (10 kg)
Temperature range	installation	0°C to +50°C
	operation	-20°C to +60°C
Outer cable diameter		6 mm
Copper conductor diameter		0,54 mm
NVP		69 %
Reaction to fire		D _{ca} - s2, d2, a1
Fire safety		flame retardant, low smoke, zero halogen, non-corrosive

1
Gigabit

Cat. 6

400
MHz

LSOH

D_{ca}

UTP (U/UTP) cable 4x2x0,54, Category 6, 400 MHz, LSOH, Euroclass D_{ca} - s2, d2, a1

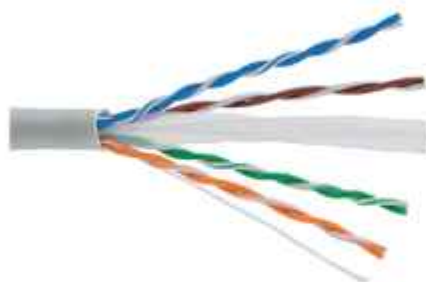
P/N: KE400U23LSOH-Dca

500 m on a reel

- unshielded cable with pairs separated by a cross filler, halogen-free sheath
- enables transmission of all high-speed protocols including 1000BASE-T
- tested in a bandwidth up to 400 MHz
- not shielded against electromagnetic interference

Min. bending radius	installation	48 mm
	operation	24 mm
Max. tensile load		100 N (10 kg)
Temperature range	installation	0°C to +50°C
	operation	-20°C to +60°C
Outer cable diameter		6 mm
Copper conductor diameter		0,54 mm
NVP		69 %
Reaction to fire		D _{ca} - s2, d2, a1
Fire safety		flame retardant, low smoke, zero halogen, non-corrosive

1 Gigabit Cat. 6 400 MHz



UTP (U/UTP) cable 4x2x0,54, Category 6, 400 MHz, Euroclass E_{ca}

P/N: KE400U23-Eca

305 m in a box

- unshielded cable with pairs separated by a cross filler, PVC sheath
- enables transmission of all high-speed protocols including 1000BASE-T
- tested in a bandwidth up to 400 MHz
- not shielded against electromagnetic interference

Min. bending radius	installation	48 mm
	operation	24 mm
Max. tensile load		100 N (10 kg)
Temperature range	installation	0°C to +50°C
	operation	-20°C to +60°C
Outer cable diameter		6 mm
Copper conductor diameter		0,54 mm
NVP		69 %
Reaction to fire		E _{ca}
Fire safety		flame retardant

1 Gigabit Cat. 6 250 MHz



Keystone Jack, Category 6, RJ45/u

P/N: KE3-C6-U-TL

- tool-free, fast and easy installation
- enables transmission of all high-speed protocols including 1000BASE-T
- guarantees a bandwidth of 250 MHz
- not shielded against electromagnetic interference
- suitable for a wide range of outlets, duct and channel systems

Note see compatible outlets on p. 060

Suitable for installing on cables	with solid wires from 0,51 to 0,64 mm (from AWG 24 to AWG 22)
Required installation depth	for sockets with angled faceplates 15 - 35 mm
	for sockets with straight faceplates 35 mm
Contact pin material	phosphor-bronze alloy coated with 6 µ of gold
Insertion / extraction cycles	min. 750

1
Gigabit

Cat. 6

250
MHz

Patch panel, Category 6, 24xRJ45/u, black, keystones included

P/N: KEP-C6-U-TL

- 24 keystone jacks KEJ-C6-U-TL (on p. 038) included
- designed for 19" cabinets
- integrated cable management
- not shielded against electromagnetic interference
- cable ties for gripping (24 pcs)
- set of M6 screws and captive nuts (4 pcs)
- grounding screw and washer (1 pc)



Height	1U (44,5 mm)	
Width	19" (482,6 mm)	
Depth (including cable management)	152 mm	
Material	front face	steel
	cable management	nickel-plated steel, corrosion-resistant
Color	black RAL 9005	
Surface	structured, matt	

1
Gigabit

Cat. 6

250
MHz

Patch panel KOMPAKT, Category 6, 24xRJ45/u

P/N: 606059

- 110/LSA termination blocks
- fast and easy installation using 110 or Krone® insertion tool on p. 075
- enables transmission of all high-speed protocols including 1000BASE-T
- guarantees a bandwidth of 250 MHz
- not shielded against electromagnetic interference
- designed for 19" cabinets
- integrated cable management



p. 075



Height	1U (44,5 mm)	
Width	19" (482,6 mm)	
Depth (including cable management)	115 mm	
Material	steel	
Color	black RAL 9005	
Surface	structured, matt	
Suitable for cables	with solid wires from 0,51 to 0,64 mm (from AWG 24 to AWG 22)	



1 Gigabit Cat. 6 250 MHz



Patch cable UTP, Category 6

P/N: KEN-C6-U-005	0,5 m	P/N: KEN-C6-U-050	5 m
P/N: KEN-C6-U-010	1 m	P/N: KEN-C6-U-070	7 m
P/N: KEN-C6-U-015	1,5 m	P/N: KEN-C6-U-100	10 m
P/N: KEN-C6-U-020	2 m	P/N: KEN-C6-U-150	15 m
P/N: KEN-C6-U-030	3 m	P/N: KEN-C6-U-200	20 m

Note non-standard cable length must be specified in the order

- unshielded cable with stranded wires, PVC sheath
- connector RJ45 complies with IEC 60603-7-x standard by its dimensions and transmission feature
- enables transmission of all high-speed protocols up to 1000BASE-T
- guarantees a bandwidth of 250 MHz
- not shielded against electromagnetic interference

Min. bending radius	25 mm	
Temperature range	-25°C to +60°C	
Outer cable diameter	5,9 mm	
Copper conductor diameter	AWG 24/7	
Contact pin material	phosphor-bronze alloy coated with 50 µm of gold	
Insertion / extraction cycles	min. 750	
Color	cable	gray RAL 7035
	boots	gray RAL 7035

10 Gigabit Cat. 6A 500 MHz



Toolless field termination RJ45/s connector for Cat. 7_A, Cat. 7, Cat. 6_A, Cat. 6 cables

P/N: KE-FT45-C6AS

- direct termination on Cat. 7_A, Cat. 7, Cat. 6_A, Cat. 6 cables
- tool-free, fast and easy installation
- connection of IP cameras and wireless devices without the need of using outlets and patch cords
- enables transmission of all high-speed protocols including 10GBASE-T within the system Cat. 6A
- guarantees a bandwidth of 500 MHz within the system Cat. 6A
- perfectly shielded against Alien Crosstalk and electromagnetic interference

Suitable for installing on cables	with solid wires from AWG 26 to AWG 22
	with stranded wires from AWG 27 to AWG 22
	with outer diameter from 6 mm to 9 mm
Contact pin material	phosphor-bronze alloy coated with 50 µm of gold
Required installation depth	55 mm